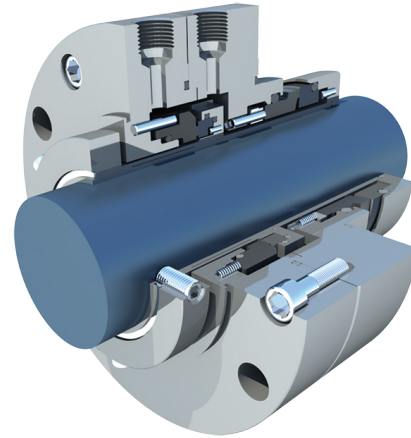


## THOMSON MECHANICAL SEALS

# 9200-D

Double cartridge seal conforming to API 682 designed for moderate slurries.



### FEATURES

- Robust faces resistant to abrasives.
- Monolithic faces resist deflection at high pressures and temperatures.
- Very Low Emission tandem design.
- Quench and drain, Flush ports.
- Self aligning face design as standard.
- Springs out of process media.

### APPLICATIONS

- Crude oil.
- Hydrocarbons with contaminants/abrasives.
- Oil Refining
- Petrochemical
- Operates with API 11/52, 11/53a, 12/52, 12/53a, 13/53a, 53b, 53c and 54 piping plans.
- Designed according to API 682 Type A, category 2 or 3, arrangement 2CW-CW or 3CW-FB.

### OPERATING RANGE

All operating range information is dependent on media, materials of construction, and support systems used. Please contact A.R. Thomson mechanical seal services department for more information.

<b>Pressure, Max:</b>	600 psig (40 bar)
<b>Temperature, Max:</b>	360°F (180°C)
<b>Speed, Max:</b>	4000 fpm (20 m/s)

### STANDARD MATERIALS

<b>Metal Parts:</b>	316SS or Hastelloy C
<b>Seal Faces:</b>	Antimony Impregnated Carbon Graphite, Silicon Carbide, Tungsten Carbide, Resin Impregnated Carbon Graphite
<b>Elastomers:</b>	FKM, FFKM, FKM/PTFE
<b>Springs:</b>	Hastelloy C

**Limitation of liability:** actual performance may vary and is determined by factors unique to a given application. It is recommended that care be taken in the selection and application of materials for hazardous services and controlled testing be undertaken to determine suitability for a specific application. A.R. Thomson Group does not make or imply any warranty of suitability for a particular purpose and is not liable for any damages arising from the use of the information in this sheet. v1.1 [WWW.ARTHOMSON.COM](http://WWW.ARTHOMSON.COM)