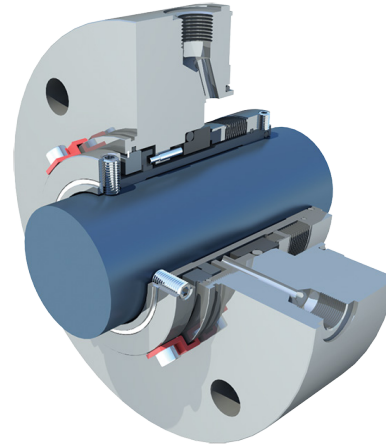


THOMSON MECHANICAL SEALS

9300

Single metal bellows cartridge seal conforming to API 682.



FEATURES

- Low Emission.
- Quench and drain, Flush ports.
- Compact construction for easy retrofit to smaller pumps.
- No Spark carbon throttle bushing to restrict process flow to atmosphere.
- Cartridge Design for quick and easy installation.
- Available with full Graphoil design.

APPLICATIONS

- Hydrocarbons.
- Oil Refining
- Petrochemical
- Process side: Operates with API plan 11, 12, 13, 23, 31, 32.
- Atmospheric Side: Operates with API plan 61, 62, 65.
- Designed according to API 682 Type B, category 1 or 2 arrangement 1 configuration 1CW-FL.

OPERATING RANGE

All operating range information is dependent on media, materials of construction, and support systems used. Please contact A.R. Thomson mechanical seal services department for more information.

Pressure, Max:	290 psig (20 bar)
Temperature, Max:	400°F (200°C)
Speed, Max:	4000 fpm (20 m/s)

STANDARD MATERIALS

Metal Parts:	316SS or Hastelloy C
Seal Faces:	Antimony Impregnated Carbon Graphite, Resin impregnated carbon graphite, Silicon Carbide, Tungsten Carbide
Elastomers:	FKM, FFKM, EPDM
Bellows Material:	Hastelloy C

Limitation of liability: actual performance may vary and is determined by factors unique to a given application. It is recommended that care be taken in the selection and application of materials for hazardous services and controlled testing be undertaken to determine suitability for a specific application. A.R. Thomson Group does not make or imply any warranty of suitability for a particular purpose and is not liable for any damages arising from the use of the information in this sheet. v1.1 WWW.ARTHOMSON.COM