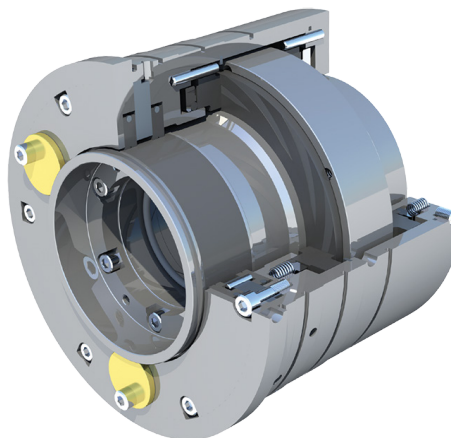


**THOMSON MECHANICAL SEALS**

# TGC

## Thomson Dual Gas Face-to-Face Lubricated Seal


**FEATURES**

- Zero fugitive emissions.
- Non-contacting, no wear and long life.
- Suitable for non-lubricating and/or environmentally hazardous media.

**APPLICATIONS**

- Chemical.
- Petrochemical.
- Refinery.
- Process gases.
- Toxic, hazardous, volatile, explosive or self-igniting media.
- Hydrogen sulfide, ethylene, hydrogen chloride.
- Pumps, compressors.

**OPERATING RANGE**

All operating range information is dependent on media, materials of construction, and support systems used. Please contact ARTG mechanical seal services department for more information.

<b>Pressure, Max:</b>	290 psig (20 bar)
<b>Temperature, Max:</b>	750°F (400°C)
<b>Speed, Max:</b>	TBA

**STANDARD MATERIALS**

<b>Wetted Parts*:</b>	316SS
<b>Seal Faces:</b>	Antimony Impregnated Carbon Graphite, Silicon Carbide, Tungsten Carbide, Resin Impregnated Carbon Graphite
<b>Elastomers:</b>	EPDM, Kalrez, Viton
<b>Springs:</b>	Hastelloy C

**Limitation of liability:** actual performance may vary and is determined by factors unique to a given application. It is recommended that care be taken in the selection and application of materials for hazardous services and controlled testing be undertaken to determine suitability for a specific application. A.R. Thomson Group does not make or imply any warranty of suitability for a particular purpose and is not liable for any damages arising from the use of the information in this sheet. v1.1 [WWW.ARTHOMSON.COM](http://WWW.ARTHOMSON.COM)