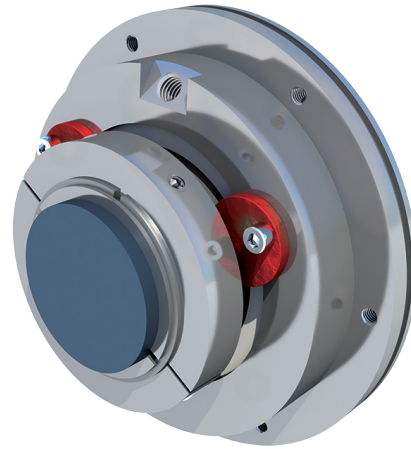


THOMSON MECHANICAL SEALS

TSP

Thomson Slurry Pro heavy duty flushless slurry seal

The Thomson Slurry Pro is an engineered seal able to operate in 60% solids and greater with customizable gland and hardware to fit your specific application.



FEATURES

- Up to 60% solids without flush or environmental controls required.
- Robust seal face, gland and component geometry.
- Abrasion and corrosion resistant metallurgy matching the pump wetted parts.
- Pre-set cartridge simplifying installation.
- Balanced design.

APPLICATIONS

- Heavy slurry applications (to 60%).
- Acidic and chemically aggressive media.
- Mining.
- Ore processing.
- Pulp and Paper.

OPERATING RANGE

All operating range information is dependent on media, materials of construction, and support systems used. Please contact A.R. Thomson mechanical seal services department for more information.

Pressure, Max:	300 psig (20 bar)
Temperature, Max:	180°F (80°C) without quench 300°F (150°C) with quench applied
Particle Hardness, Max:	MOH 9
Slurry %, Max:	60

STANDARD MATERIALS

Wetted Parts*:	CD4MCuN
Seal Faces:	Silicon Carbide, Tungsten Carbide
Elastomers:	FKM, Aflas, EPDM
Springs:	Hastelloy C

*Other abrasion/corrosion-resistant materials available.

Limitation of liability: actual performance may vary and is determined by factors unique to a given application. It is recommended that care be taken in the selection and application of materials for hazardous services and controlled testing be undertaken to determine suitability for a specific application. A.R. Thomson Group does not make or imply any warranty of suitability for a particular purpose and is not liable for any damages arising from the use of the information in this sheet. v1.1 WWW.ARTHOMSON.COM